

MULTIPLE-FAMILY RESIDENTIAL DWELLINGS

Multiple-family residential dwellings are buildings or housing groups which consist of several units, each of which is intended and designed for one family or individual occupant.

The designation is not dependent upon the actual occupancy of the units for their intended use. Shakopee Utilities will endeavor to adjust billing tier structures to accommodate residential units located in multiple-family dwelling installations and billed through a common water meter.

The owner or the customer of record in such instances is responsible for furnishing all necessary information and documentation to provide Shakopee Utilities the basis for making such adjustments. Adjustment will apply forward from the date documentation is provided and the determination made.

METERED FIRE SERVICES, DETECTOR/CHECK INSTALLATIONS AND SIMILAR

Fire services having water meters, detector/check installations and similar services will be billed the regular standard monthly fixed charge applicable to all water meters. Water usage for actual fire suppression is not billed.

No other water usage is permitted through such services and such usage may be subject to charges and penalties specified under other resolutions, ordinances, or law.

QUESTIONS?

Contact SPU Water Department
Call 952.445.1988 or
visit spucweb.com



WATER CONSERVATION TIPS

Conserving water can make a significant difference in your water bills. Use this checklist of water conservation and efficiency measures to help save water and money:

- When washing dishes by hand, don't let the water run while rinsing. Fill one sink with wash water and the other with rinse water.
- Keep a pitcher of water in the refrigerator instead of running the tap for cold drinks.
- Wash produce in the sink or a pan that is partially filled with water instead of running water from the tap.
- If your shower can fill a one-gallon bucket in less than 20 seconds, replace the shower head with a water-efficient option.
- Place food coloring in the toilet tank. If it seeps into the toilet bowl, you have a leak. It's easy to fix and can save 600 gallons of water each month.
- Grab a wrench to fix any leaky faucets. It's simple, inexpensive and can save 140 gallons each week.
- Insulate hot water pipes to minimize the amount of water you need to run to get hot water to the faucet.
- When buying new appliances look for the ENERGY STAR® label. New, water-saving washing machines save up to 20 gallons per load.

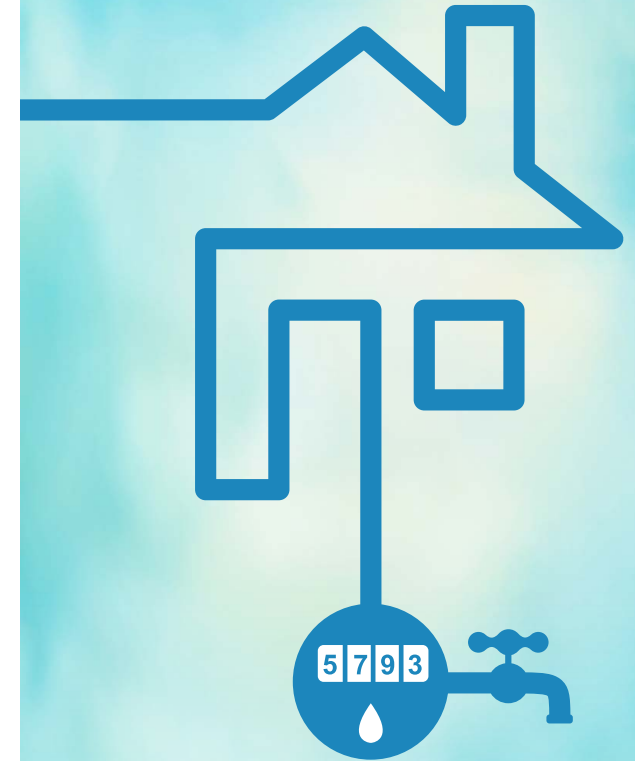
For more water saving tips,
visit www.wateruseitwisely.com



SHAKOPEE PUBLIC UTILITIES

255 Sarazin Street • PO Box 470
Shakopee, MN 55379
952.445.1988 • spucweb.com

Office hours: Monday thru Friday 7:30 a.m.-4:00 p.m.



Water Rates

Effective January 2018



SHAKOPEE PUBLIC UTILITIES

Water Rates *Effective January 2018*

| EFFECTIVE JANUARY 2017 | AVAILABILITY | USAGE CHARGE (per 1000 GALLONS) | RECONSTRUCTION CHARGE (per 1000 GALLONS) | FIXED SERVICE CHARGE | | | | | | | | | | |
|----------------------------------|--|---------------------------------|--|----------------------|----------|--------|------------|---------|---------|---------|----------|----------|---------|----------|
| | | | | 5/8 X 3/4 INCH | 3/4 INCH | 1 INCH | 1-1/2 INCH | 2 INCH | 3 INCH | 4 INCH | 6 INCH | 10 INCH | | |
| EFFECTIVE JANUARY 2017 | RESIDENTIAL SERVICE: RW ¹⁾ CONSERVATION RATE STRUCTURE | 1 - 5000 GALLONS \$2.49 | \$0.43 | PLUS | PLUS | \$3.37 | \$3.71 | \$4.71 | \$6.06 | \$9.76 | \$37.03 | \$47.12 | \$70.69 | \$168.30 |
| | | >5000 GALLONS \$2.98 | | | | | | | | | | | | |
| | COMMERCIAL AND INSTITUTIONAL SERVICE: CW ²⁾ | \$2.28 | \$0.43 | \$3.37 | \$3.71 | \$4.71 | \$6.06 | \$9.76 | \$37.03 | \$47.12 | \$70.69 | \$168.30 | | |
| | INDUSTRIAL SERVICE: IW ³⁾ | \$1.98 | \$0.43 | \$3.37 | \$3.71 | \$4.71 | \$6.06 | \$9.76 | \$37.03 | \$47.12 | \$70.69 | \$168.30 | | |
| IRRIGATION SERVICE ⁴⁾ | \$2.98 | \$0.43 | \$3.37 | \$3.71 | \$4.71 | \$6.06 | \$9.76 | \$37.03 | \$47.12 | \$70.69 | \$168.30 | | | |

1) Single and multiple family dwellings.

2) Facilities that engage in the sale, lease, rental or trade of products, goods, and services, including office buildings, institutional facilities, schools, churches, governmental buildings and nursing homes.

3) Facilities that engage in the production, manufacturing, warehousing, storage or transfer of goods, products, commodities or other wholesale items.

4) Lawn and landscape irrigation.

WATER SERVICE LINE FACTS

Service lines are owned and maintained by the property owner from the point of connection to the municipal water main, including all fittings, etc. on the water main, which are necessary for that connection. It is the responsibility of the customer or property owner to maintain the service line from the water main into the house or building.

If you need assistance determining if and/or where the service is leaking, please contact the SPU Water Department at 952.445.1988.

APPLIES TO ALL CUSTOMERS

MONTHLY BILLS: The monthly bill is the sum of the Usage Charge, Reconstruction Fund Charge and the Fixed Service Charge.

Minimum bill provisions, late charges, penalties, and special charges also apply.

DEPOSIT REQUIREMENTS: Deposit requirements shall be consistent with terms outlined in a separate resolution of the Shakopee Public Utilities Commission.

CONSERVATION RATE STRUCTURE: To encourage water conservation and to comply with Minnesota Statute 103G.291, SPU adopted a Conservation Rate Structure for residential water service effective January 1, 2010.

The Usage Charge for the first 5,000 gallons of water used is \$2.49 per 1,000 gallons; each additional 1,000 gallons is \$2.98. Additionally, the Usage Charge for irrigation service, when metered separately, is \$2.98 per 1,000 gallons.

ODD/EVEN WATERING PROGRAM: SPU maintains seasonal water restrictions May 1st through October 1st.

If your address ends in an even number, sprinkle only on even-numbered days. If your address ends in an odd number, sprinkle only on odd-numbered days.

No sprinkling is allowed between 12 noon and 5:00 p.m. regardless of your address.