

LOW LOAD FACTOR CLAUSE

A customer whose usage characteristic is routinely below a 5 percent monthly load factor may apply to the Utilities Commission for assignment to another non-demand rate schedule. Consideration will be given to the contribution in aid of construction made by the customer to offset capital investment by the Shakopee Utilities and may include other factors.

Any assignment granted will continue only for the period of time specified and billing will revert to the standard rate schedule at the end of that period, except when the assignment is canceled before the end of that period by the Utilities Commission. The Utilities Commission reserves the right to cancel an assignment granted under this section and such cancellation may occur without prior notice.

LIMITED OFF PEAK CLAUSE

A customer normally billed under a demand rate schedule who anticipates a single instance usage of energy, which is not typical for their service, may apply to the Utilities Commission in advance of the occurrence for an advanced waiver of the demand charges for that single instance of usage. Consideration will be given to the estimated cost of purchased power for the period of time covered by the single instance usage; the ability of the facilities in place to accommodate the unusual load; and other possible factors.

Any advance waiver granted will apply only for the period of time specified and billing will revert to the standard rate schedule at the end of that period, unless the waiver is canceled before the end of that period by the Utilities Commission. The Utilities Commission reserves the right to cancel the waiver granted under this section and such cancellation may occur without prior notice.

LARGE GENERAL SERVICE

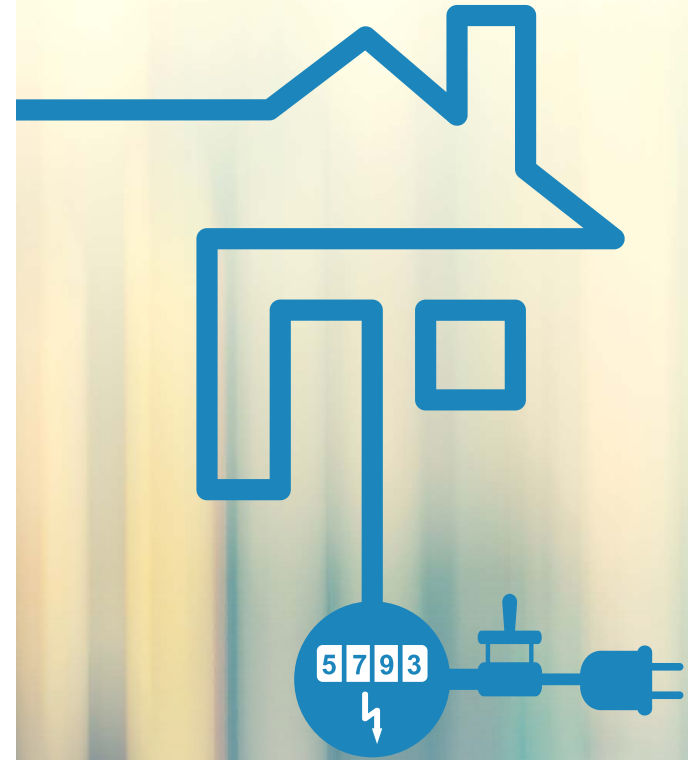
Determination of Billing Demand: The billing demand shall be the customer's greatest 15 minute demand, in kilowatts, incurred during the month for which the bill is rendered, but not less than 60% of the highest demand during the preceding 11 months or 15 KW, whichever is greater.

LARGE INDUSTRIAL SERVICE

Determination of Billing Demand: The billing demand shall be the customer's greatest 15 minute demand, in kilowatts, incurred during the month for which the bill is rendered, but not less than 60% of the highest demand during the preceding 11 months or 15 KW, whichever is greater.

The customer agrees to maintain an average power factor at or above 90% lagging. If the average power factor is less than 90% lagging, the billing demand shall be adjusted by multiplying the actual 15 minute demand measured during the month by the ratio of 90% to the average power factor expressed in percent.

Average Power Factor: The average power factor is defined to be the quotient obtained by dividing the kWh used during the month by the square root of the sum of the squares of the kWh used and the lagging reactive kilovolt-ampere-hours supplied during the same period. Any leading kilovolt-ampere-hours supplied during the period will not be considered in determining the average power factor.



Electric Rates

Effective January 2018



SHAKOPEE PUBLIC UTILITIES



SHAKOPEE PUBLIC UTILITIES

255 Sarazin Street • PO Box 470
Shakopee, MN 55379

952.445.1988 • spucweb.com

Office hours: Monday thru Friday 7:30 a.m.-4:00 p.m.

Shakopee Public Utilities
Electric Rates
 Effective January 2018

RESIDENTIAL	AVAILABILITY	SERVICE CHARGE (per month)	ENERGY CHARGE (per kWh)	POWER COST ADJUSTMENT	CONSERVATION PROGRAM CHARGE	RELOCATION UNDERGROUND CHARGE (per kWh)	MINIMUM BILL
	RESIDENTIAL SERVICE ¹⁾	\$9.00	\$0.0988	VARIABLE CHARGE	1.5% OF ENERGY CHARGES	\$0.00025	SERVICE CHARGE
	SERVICE - SENIOR CITIZENS ²⁾	\$6.00	\$0.0988	VARIABLE CHARGE	1.5% OF ENERGY CHARGES	\$0.00025	SERVICE CHARGE

1) Residential dwellings.
 2) Residential dwelling occupied by senior citizen(s).

NON-RESIDENTIAL	AVAILABILITY	SERVICE CHARGE (per month)	DEMAND CHARGE (per kW)	ENERGY CHARGE (per kWh)		POWER COST ADJUSTMENT	CONSERVATION PROGRAM CHARGE	RELOCATION UNDERGROUND CHARGE (per kWh)	MINIMUM BILL
	COMMERCIAL SERVICE ¹⁾	\$14.00	—	\$0.0944		VARIABLE CHARGE	1.5% OF ENERGY CHARGES	\$0.00025	SERVICE CHARGE
	LARGE GENERAL SERVICE ²⁾	\$60.00	\$9.00	\$0.0585		VARIABLE CHARGE	1.5% OF ENERGY CHARGES	\$0.00025	SERVICE CHARGE + DEMAND CHG
	LARGE INDUSTRIAL SERVICE ³⁾	\$100.00	\$9.00	\$0.0585 (up to 400 hours times the billing demand)	\$0.0523 (all kWhs in excess of 400 hours times the billing demand)	VARIABLE CHARGE	1.5% OF ENERGY CHARGES	\$0.00025	SERVICE CHARGE + DEMAND CHG

1) Non-residential customers with less than 15 KW demand.
 2) Non-residential customers with demand of at least 15 KW but less than 150 KW. Service above 75 KW is 3 phase only, except by written exception.
 3) Non-residential customer with demand of 150 KW and over. Minimum Power Factor 90%

APPLIES TO ALL CUSTOMERS

DEPOSIT REQUIREMENTS: Deposit requirements shall be consistent with terms outlined in a separate resolution of the Shakopee Public Utilities Commission.

MONTHLY ENERGY BILLS: The monthly energy bill is the sum of the service charge, energy charge, power cost adjustment, conservation program charge and relocation underground charge. Monthly bills also include the sum of the demand charge, and any adjustments for power factor and/or other adjustments referenced in this or other rate resolutions of the Shakopee Public Utilities Commission. Minimum bill provisions, late charges, penalties, and special charges also apply.

POWER COST ADJUSTMENT (PCA): This monthly adjustment reflects the increases or decreases in SPU's cost of purchased power. The PCA is approved by Commission resolution.

CONSERVATION PROGRAM CHARGE: Every customer is assessed a conservation program charge to subsidize mandatory state energy-saving goals. This charge is 1.5% of all monthly energy charges billed, which include service charge, power cost adjustment, relocation underground charge and energy charge.

RELOCATION UNDERGROUND CHARGE: This charge is collected to cover the additional cost of relocating overhead wires underground when SPU is required to do so due to a public improvement, such as a road widening.

PRIMARY METERING: At the option of the electric department, secondary voltage service may be metered at the primary voltage, in which case a 2% cash discount will be allowed on the amount of the monthly bill, with the discount applied to all charges except the PCA.

PRIMARY VOLTAGE SERVICE: If the customer agrees to take service and be metered at the primary voltage available for his/her location and to pay all costs incurred

in the ownership, operation and maintenance of transformers and substation equipment (except meters), a cash discount of 5% will be applied to all energy charges (except the PCA) on the monthly bill.

LOAD FACTOR: Load factor is defined to be the quotient obtained by dividing the kWh used during the month by the KW demand during the same period, and dividing the result by the number of hours in that billing period.

MINIMUM POWER FACTOR REQUIREMENT: The customer must maintain an average power factor not less than 80% lagging (90% for Large Industrial Service) and avoid leading power factor at any time.

PROMPT PAYMENT PROVISION: A penalty of 5% shall be added to the current bill if not paid in full on or before the 15th of the month following the date of billing.